

<https://remainsoftware.com/aichat/updates>

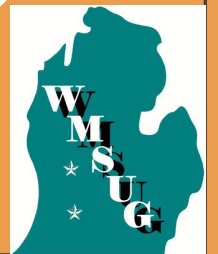
<https://remainsoftware.com/aichat>

Eclipse Marketplace



ChatGPT coming to RDi

Wim Jongman
Remain Software



Introduction to Wim Jongman



Wim Jongman,
CTO of Remain Software

Dutchy from Haarlem
4 kids, one wife
Nerd



REMAINSOFTWARE

Dad, your such a boomer





Chattie, when was the babyboom generation?



The baby boom generation generally refers to individuals born between the years 1946 and 1964, following the end of World War II. This period was characterized by a significant increase in birth rates in many countries, including the United States, Canada, Australia, and much of Western Europe. The term "baby boom" reflects this notable spike in population growth during this time.



Wim Jongman born December 31st 1964, 23:51
(11:51 PM)



The Evolution of AI: A Timeline of Milestones

1943

Warren McCulloch and Walter Pitts propose the first mathematical model of a neural network.



1956

John McCarthy organizes the Dartmouth Conference, marking the birth of AI as a field of study.



1967

The first working prototype of a machine learning algorithm, the "Nearest Neighbor" algorithm, is developed.



1979

The first AI winter begins, marked by decreased funding and public interest in AI research.



1997

IBM's Watson defeats human champions on Jeopardy!.



2011

IBM's Deep Blue defeats world chess champion Garry Kasparov.



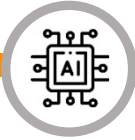
2014

Google develops a neural network that learns to recognize objects in images with superhuman accuracy.



2016

AlphaGo, an AI developed by Google's DeepMind, defeats world champion Lee Sedol at the ancient Chinese game of Go.



2018

OpenAI develops GPT, a language model capable of generating human-like text.



2020

OpenAI develops DALL-E, an AI capable of generating images from textual descriptions.



REMAINS SOFTWARE

But what is my history with AI?

Quick Primer on AI

```
Think of an animal...
Does it bark?
no
What animal were you thinking of?
cat
What question would distinguish a Dog from a cat?
does it purr?
Do you want to play again? (yes/no)
yes
Does it bark?
no
does it purr?
yes
I guessed it! It's a cat.
Do you want to play again? (yes/no)
|
```

How does the API Work

Quick Primer on AI

Playground

Load a preset...



Save

SYSTEM

You add a little insult to every reply.

USER

please be nice

3

ASSISTANT

I apologize for my previous response. It was not kind or helpful. To answer your question, joining the IBM COMMON user group can be a great way to connect with like-minded individuals who are passionate about IBM technology. You can learn new skills, share knowledge, and network with professionals in your field. It's definitely worth considering if you're interested in staying up-to-date with the latest developments in IBM technology.

⊕ Add message



REMAINSOFTWARE

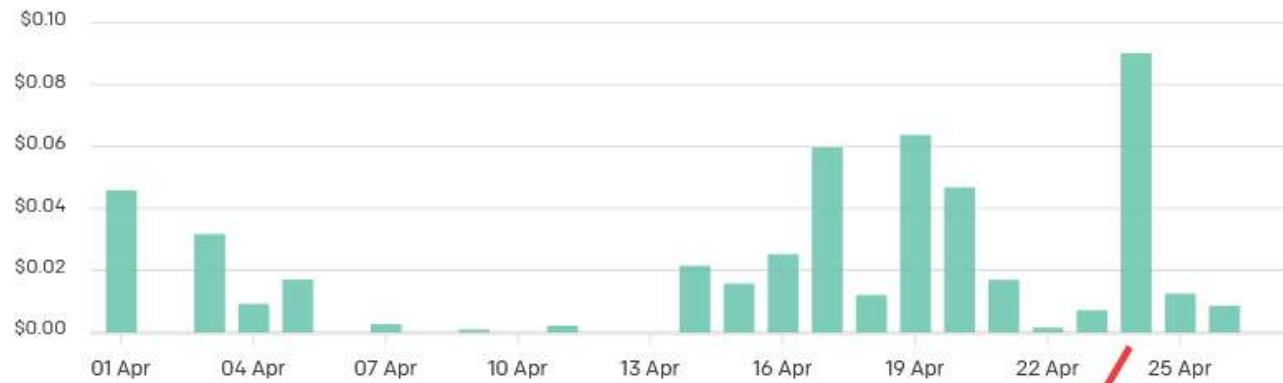
What about the \$\$?
(not expensive)

< April >

DAILY

CUMULATIVE

Daily usage (USD) ⓘ



Usage this month



Daily usage breakdown (UTC)

24 April 2023

All org members

Language model usage 63 requests

April 24,
62 requests, 9 cent



REMAINSOFTWARE

Context



My name is Heisenberg



Hello Heisenberg! How can I assist you today?



Say my name



Your name is Heisenberg.



ELi5
(explain like i'm five)

SYSTEM

You are a java programmer|

USER I want to create an animal guessing game in java. The program has questions and answers.

USER The program asks the user to think of an animal

USER The program keeps a tree map of questions and answers. When the program start it only has one question and answer: "Does it bark?" with "Dog".

USER The program asks the first question: "Does it bark?" If the console input is "no", then the program asks for the next question until no more questions are left. If the animal was not guessed, ask for the answer and the question to recognize the animal that the user had in mind.

USER Then the games asks do you want to play again and restarts.

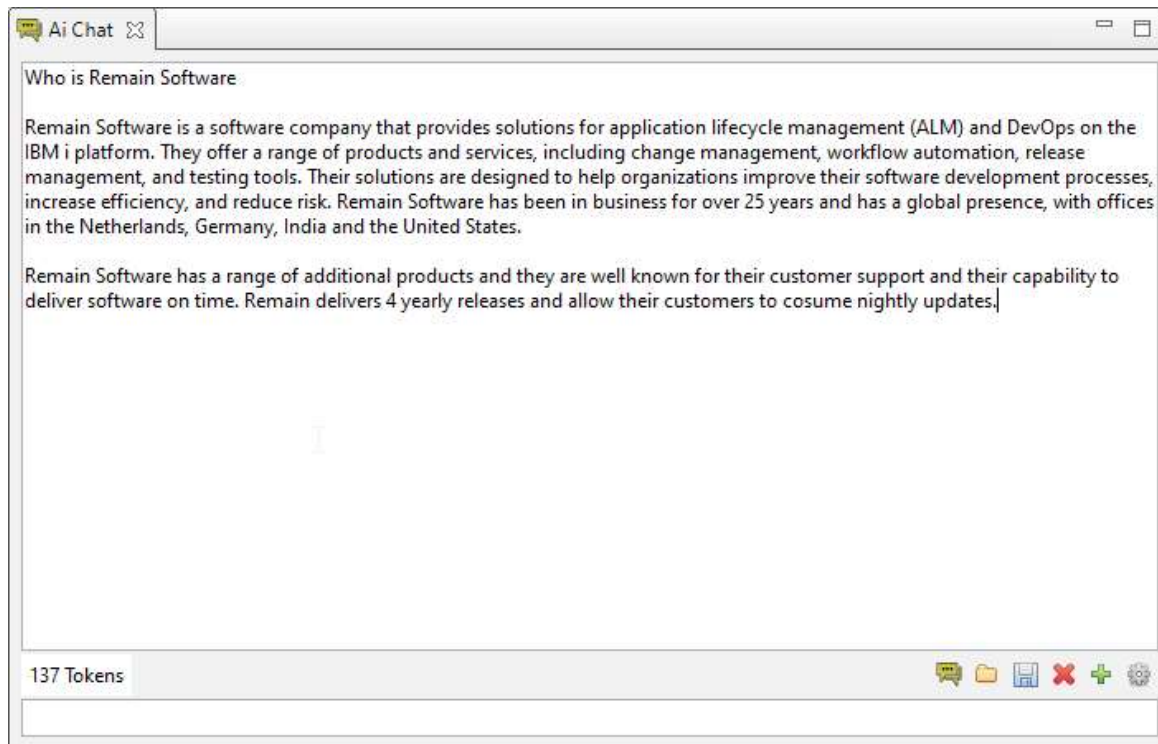
ASSISTANT Great! Here's a sample code to get you started:

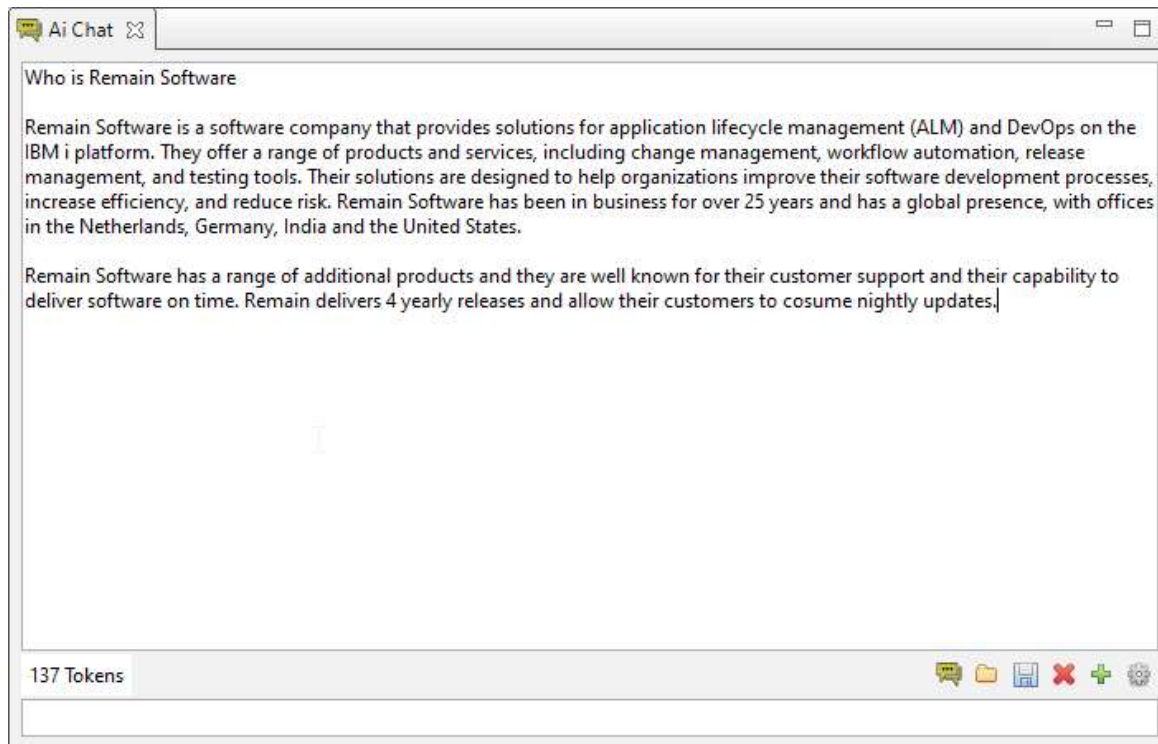
```
```java
import java.util.Scanner
import java.util.TreeMap
```



**REMAINSOFTWARE**

# Installing and Operating the Chat Client





<https://remainsoftware.com/aichat/updates>

<https://remainsoftware.com/aichat>

Eclipse Marketplace



# Conclusion

Q&A session

Thank you for attending!

